



AFRIMARI



Genscape:

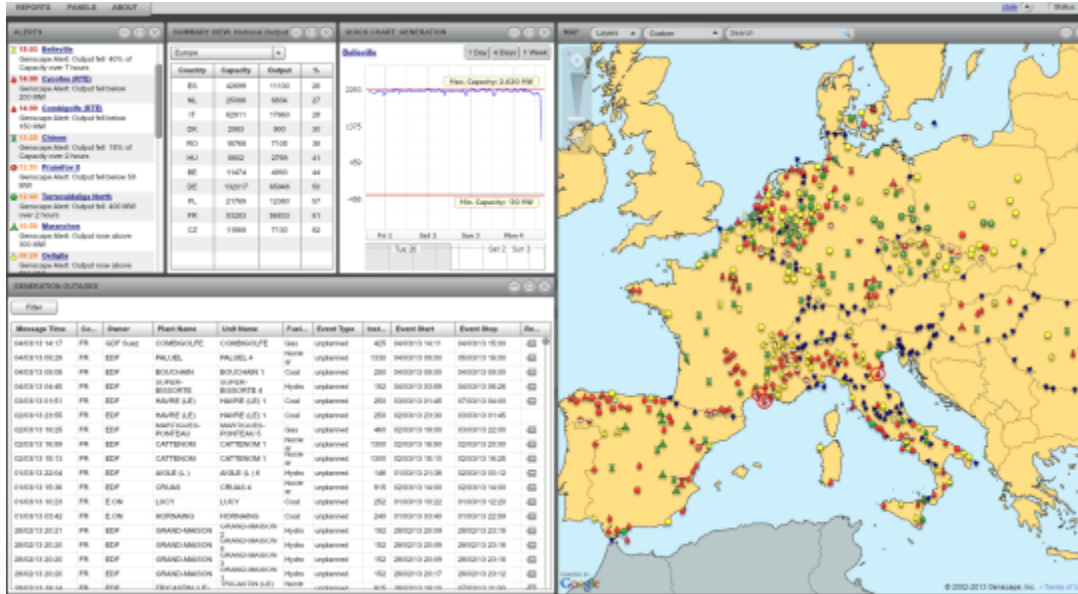
Global Commodity Monitoring

Presented by: Jonathan Dale

March 2014

© 2014, Genscape Incorporated. All rights reserved.

Genscape Evolution

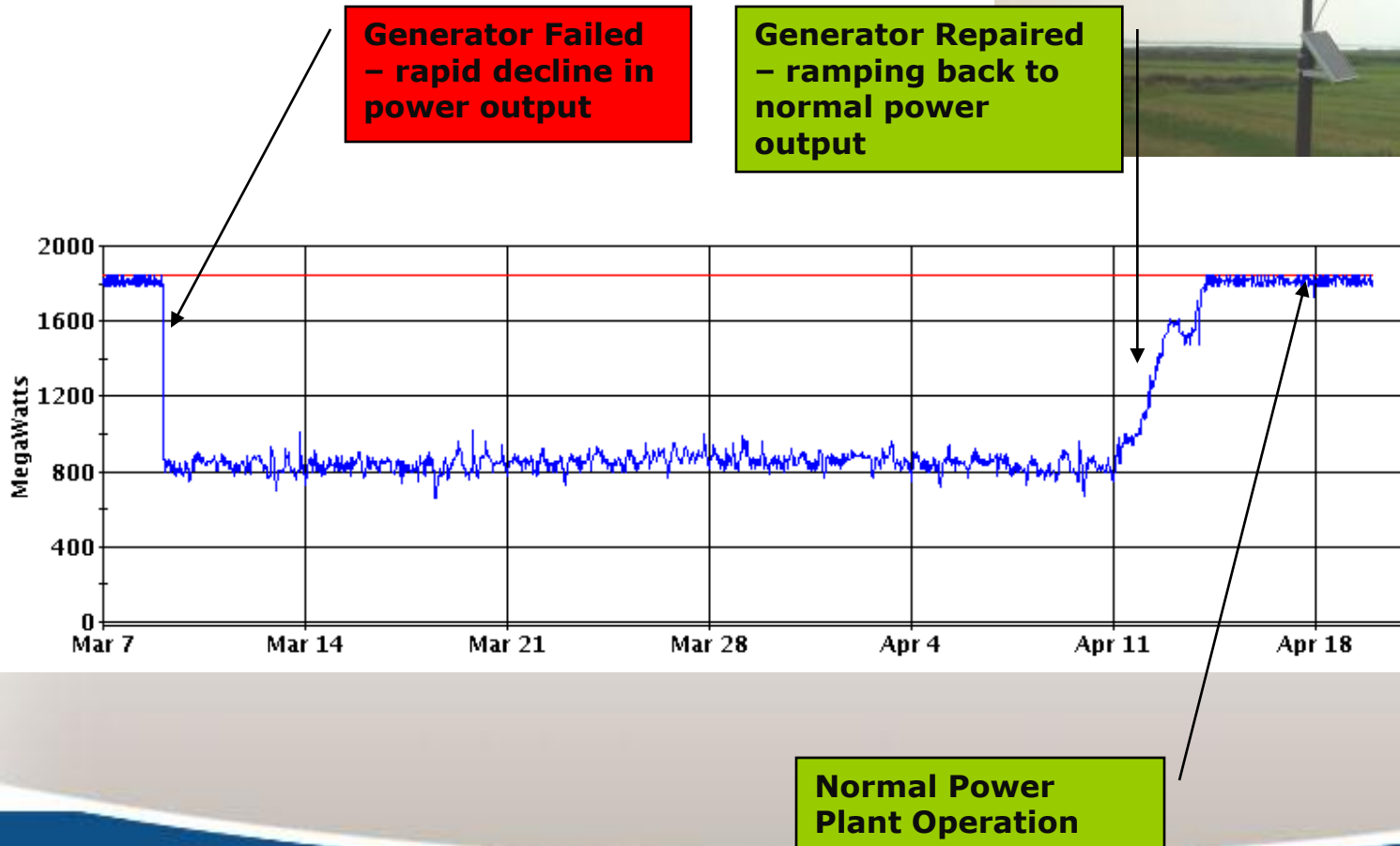


- Conceived in 1999 by two NA Power Traders. Sterling Lapinsky & Sean O’Leary
- Originator of real-time power generation information to support decision making.
- 2250 monitoring units across 12 European countries reporting in real-time 24/7.

- European Power RT Coverage:
 - 472 proprietary Plants; 342,691 MWs of installed capacity – approx. 59%
 - Approx 69% of Coal & Lignite capacity
 - 100% Nuclear Coverage

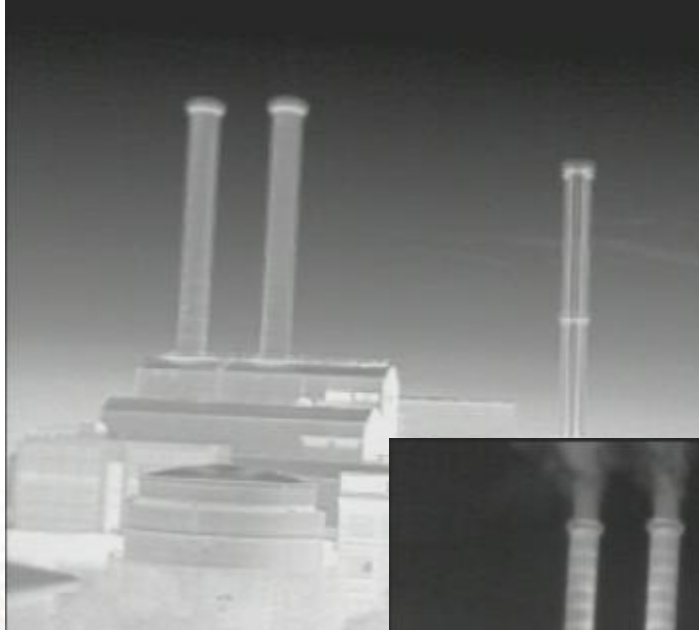
Electromagnetic Power Line Monitoring

Proprietary solar-powered, wireless, EMF detection device developed by Genscape in 2000



Facility Thermal Imaging

Power Plants



Berlin-Mitte



- Genscape estimated power plant generation output
- Genscape monitors plants with in-situ cameras to detect unit shutdown in heavily urbanized areas and those unsuitable for EMF monitoring.

Oil - Storage monitoring

- Extensive infrastructure mapping

Mercuria Terminals Flushing Europawegzuid



Infra-red fly overs



Refinery monitoring

03/27/2014 11:40



BP - Kinneil Fractionation Terminal Stock Image

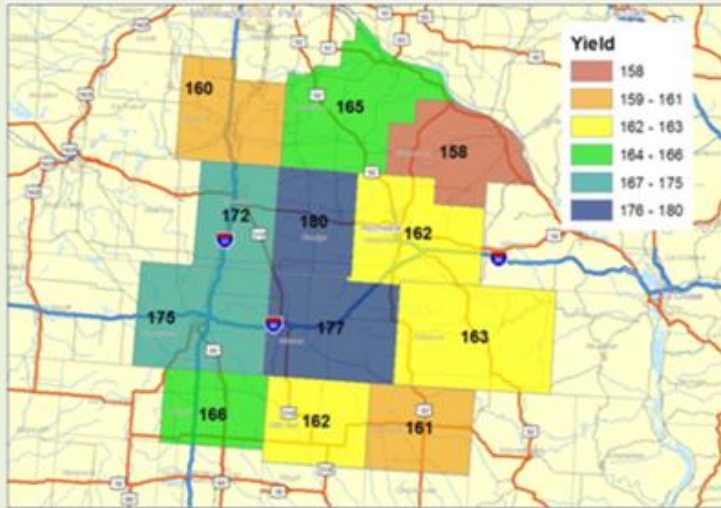


- Real time Infra-red monitoring of refinery activity across Europe and NA
- 47 Global refineries, 259 units; 11,293,990 bpd capacity

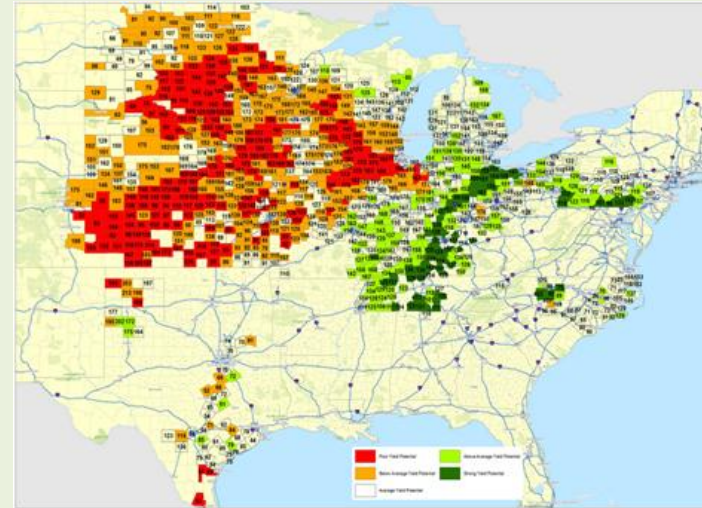
Satellite driven Agricultural production data

Example LandViewer Data

Local draw area – predicted yield



Predicted yield deviation vs. 5 year avg.



- LandViewer provides technology driven analysis for land use, land use changes and corn yield on a parcel by parcel basis. With LandViewer fundamental weather and vegetation vigor data are available daily

Maritime data completes the supply chain



- 2013 acquisition of Hamburg based Vesseltracker, created the worlds largest land and sea oil supply chain monitoring network.



- Through a JV with Commodity Vectors, Genscape has partnered to develop a state of the art artificial intelligence service monitoring and predicting global LNG cargos.
- In a growing world of big data Genscape continues to look at ways to integrate and optimize its multiple proprietary data sets to provide the complete supply chains lacking in the marketplace.